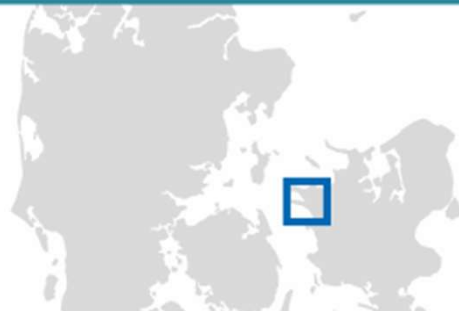


14. Juni 2018

Kalundborg Ny Vesthavn

Dansk Spuns- & Rammedag



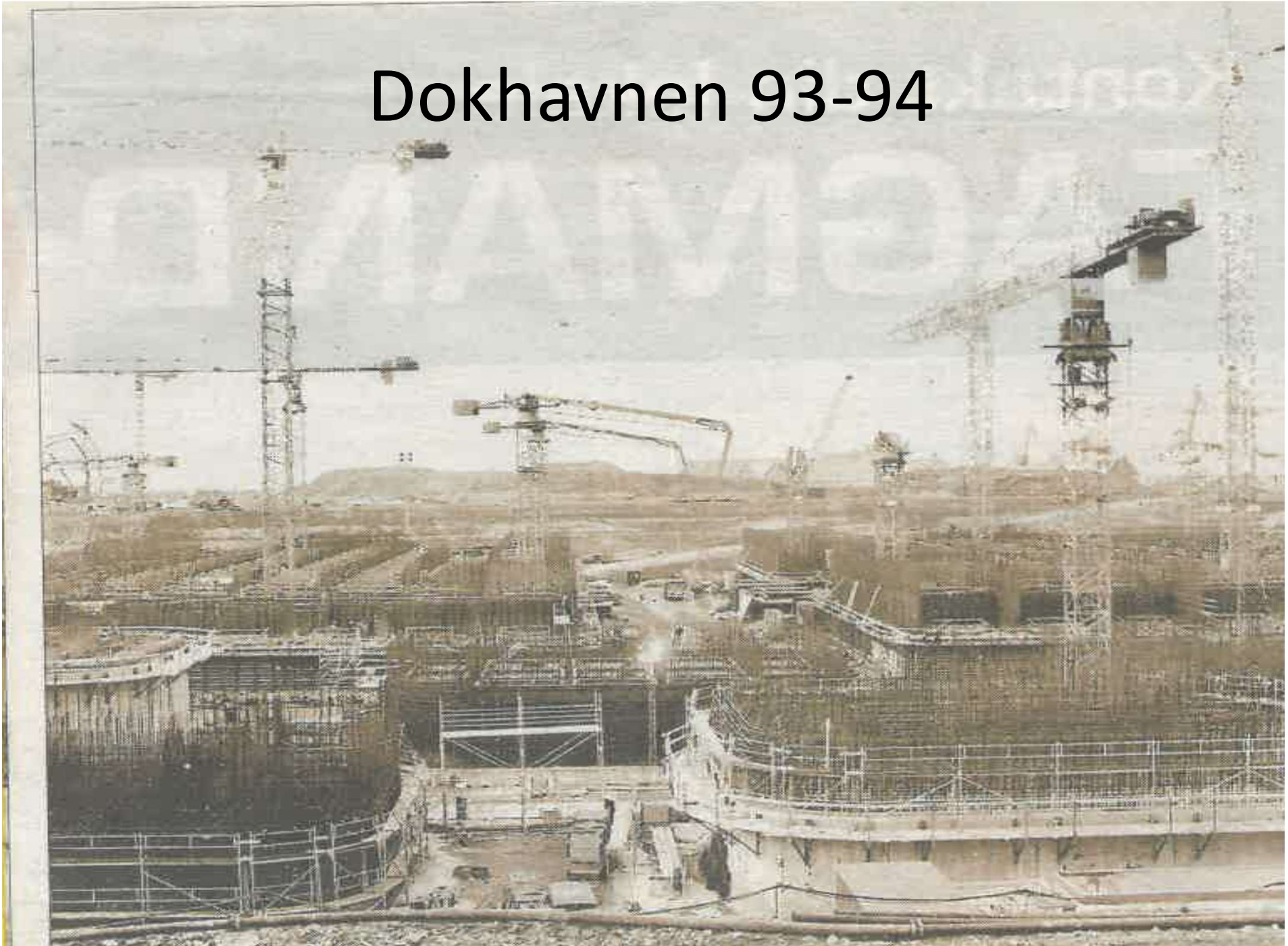
1985



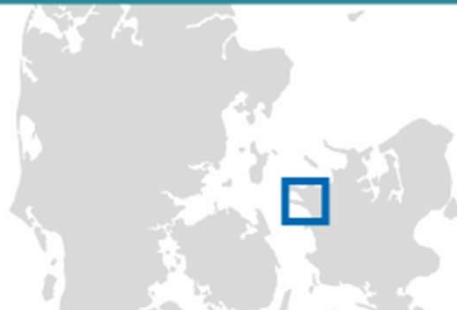
Sydhavn 1992-1993



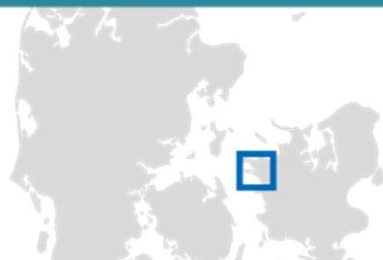
Dokhavnen 93-94

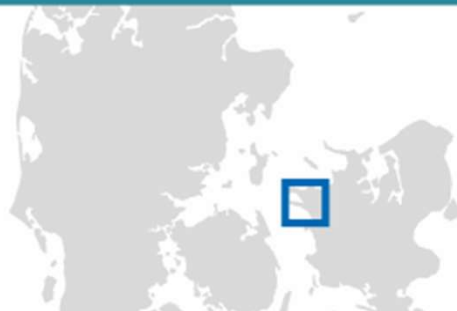


Overview











Krydstogt



Nogen steder mere "presset" sammen end andre

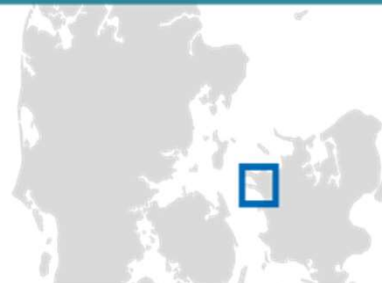




Port of Kalundborg

Denmark

December 2015





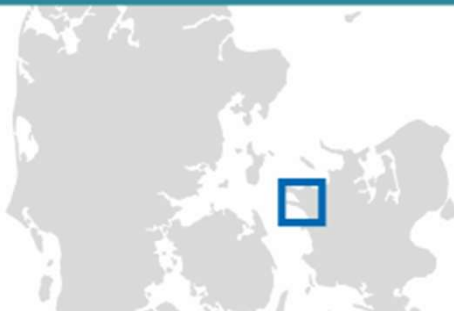
4 havneterminaler

Kalundborg Havn
Statoilhavnen
Asnæsværkets havn
Og Interterminals

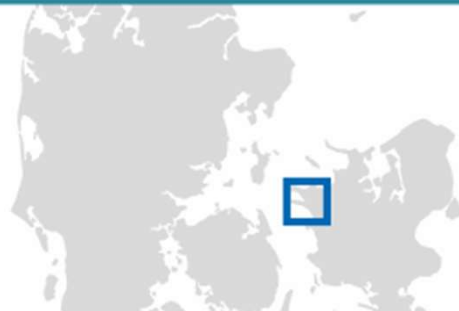
Årlig
godsomsætning
12.95 mio. tons

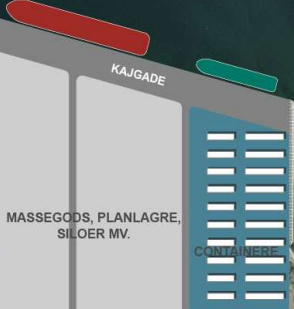
(2015 – 13% af
DK's samlede
Søværts gods-
omsætning)

Ca. 2.500 skibsanløb



**Efter 10 års overvejelser,
undersøgelser osv
kastede vi os ud i at
etablere Kalundborg Ny
Vesthavn**





MASSEGODS, PLANLAGRE,
SILOER MV.

CONTAINERBELT



MASSEGODS, PLANLAGRE,
SILOER MV.

BEPLANTNINGSBELTE

ADGANGSVEJ

11. Oktober 2017



Startede med at bygge en ø



06.11.2017



24.11.2017



24.11.2017



12.12.2017



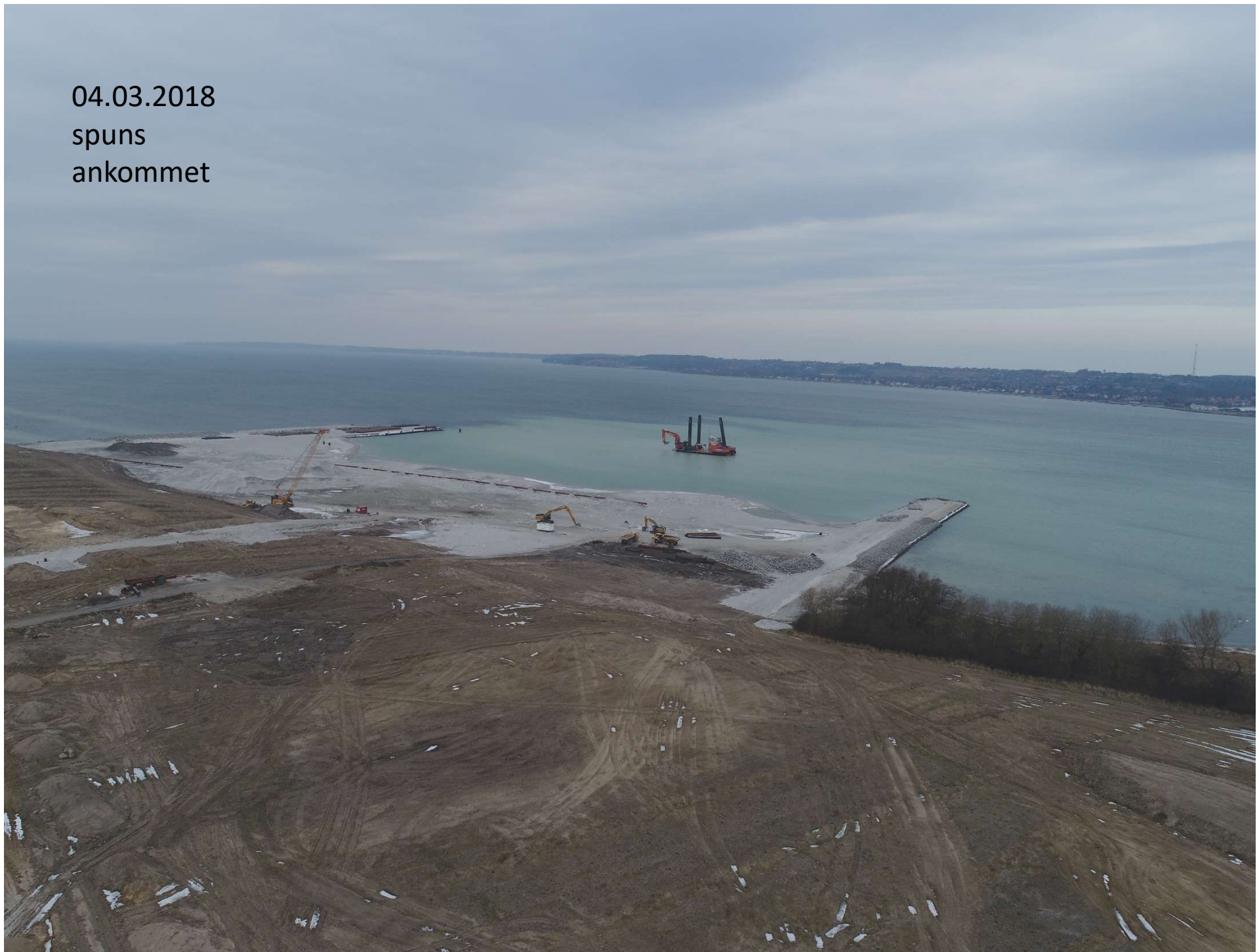
21.12.2017



Anlægsarbejdet den 13.2.2018

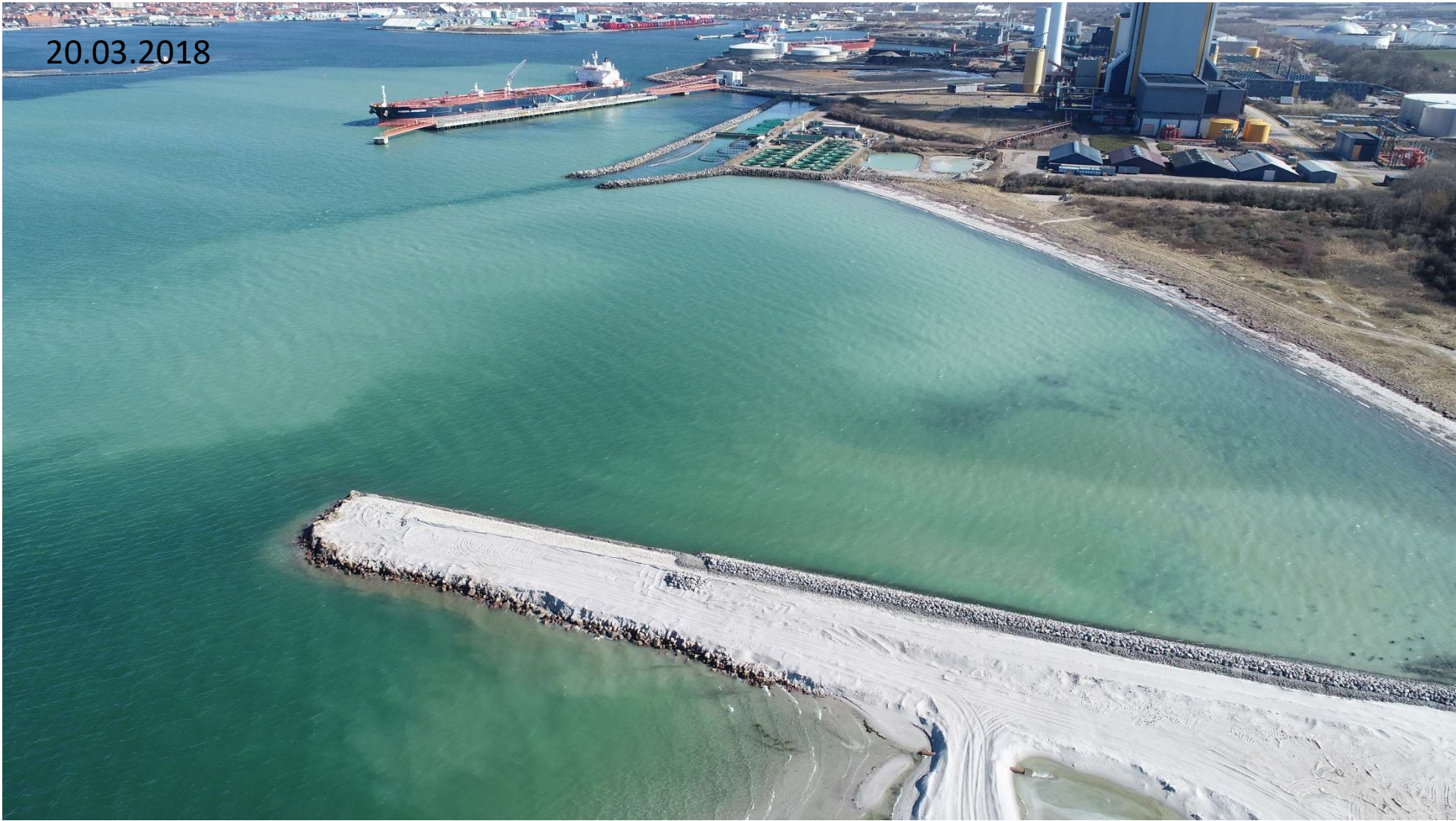


04.03.2018
spuns
ankommet

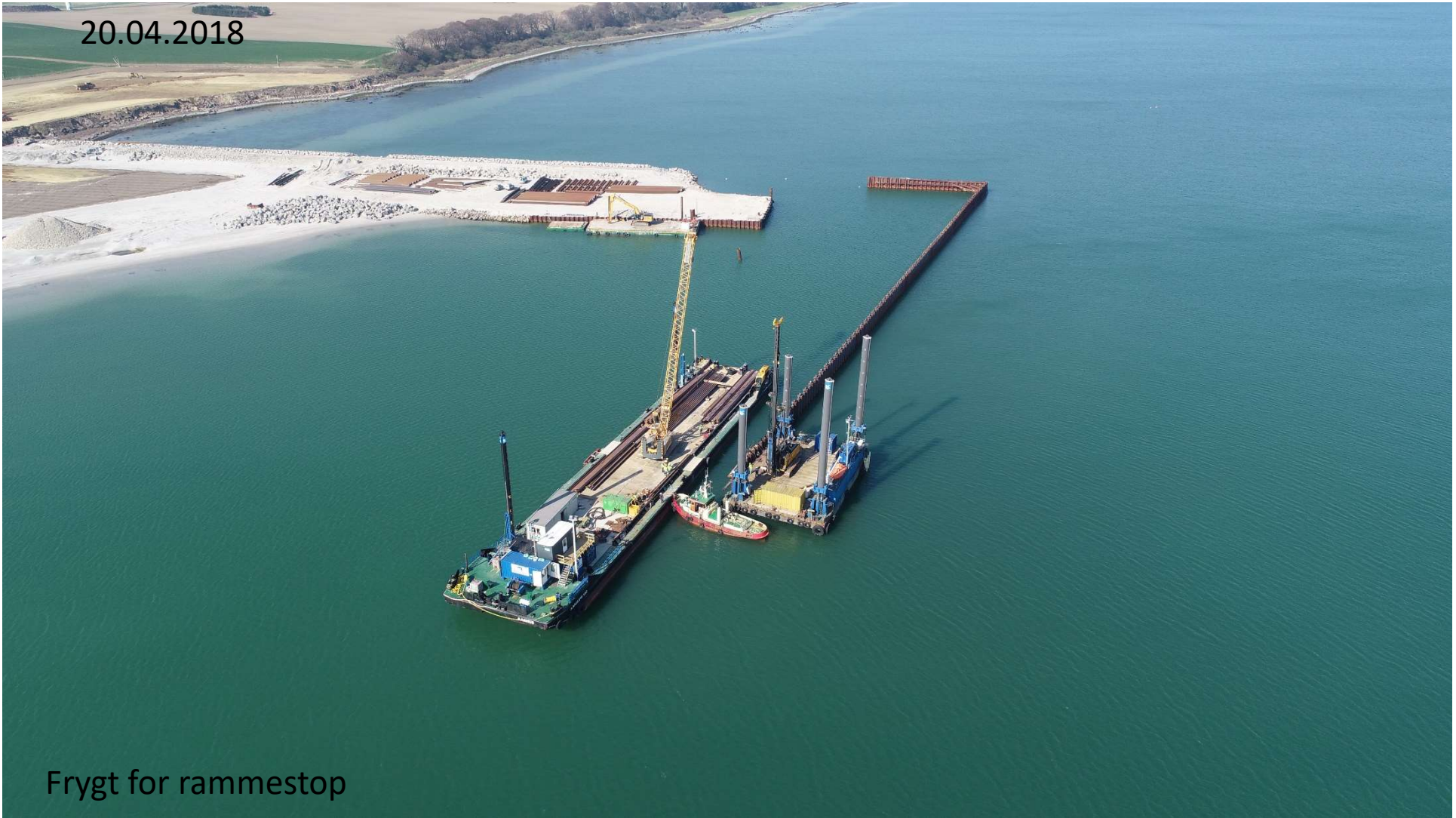




20.03.2018

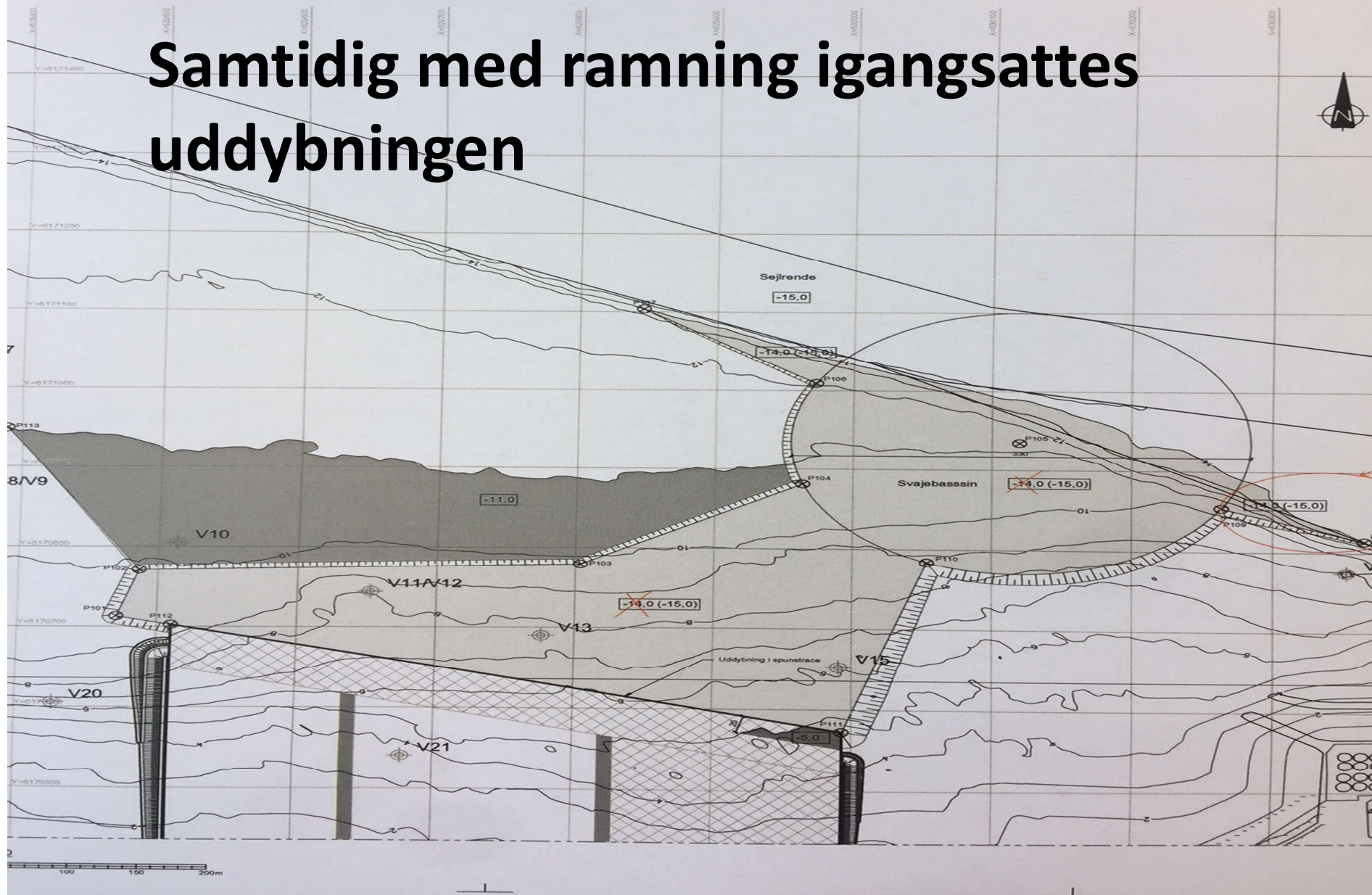


20.04.2018



Frygt for rammestop

Samtidig med ramning igangsattes uddybningen



20.03.2018







Wasa Dredging uddyber til søs



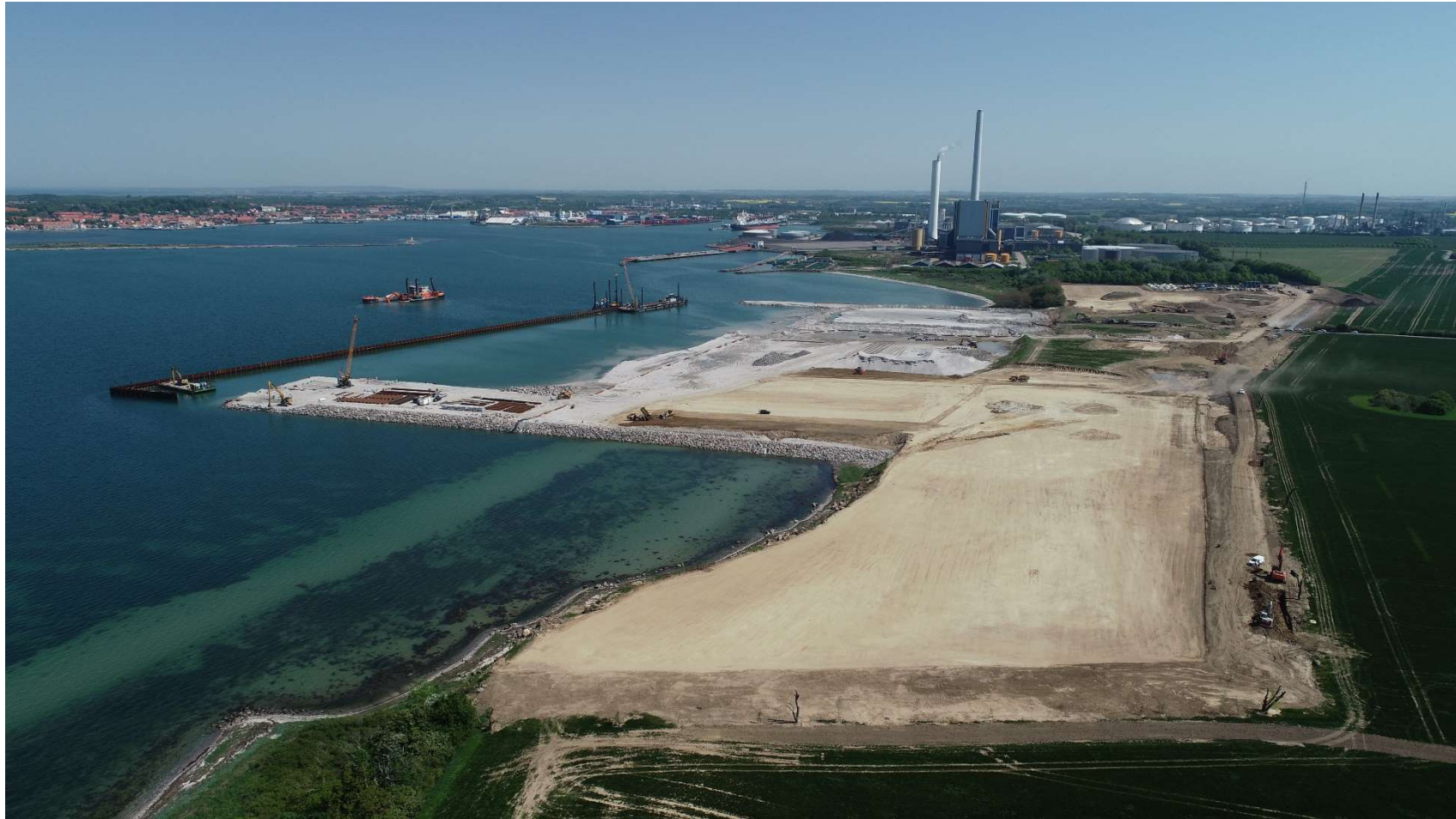
5. Maj 2018







Ny Vesthavn 14.5.2018





Rute 22 og rute 23

